

# Portable Industrial Air Purifier



Your solution for

- Smoke
- Dust
- Oil Mist
- Odors
- Paint Mist
- And any more

Made in Germany  
AirMex Air Cleaning Systems



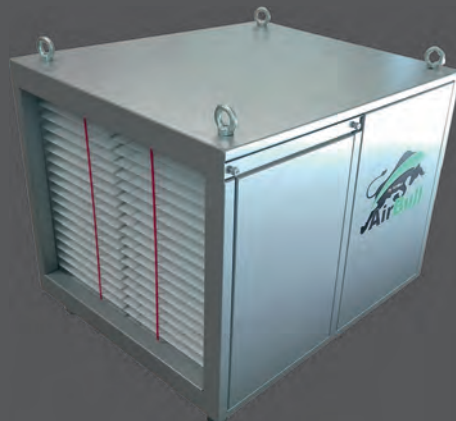
# Why Industrial Air Cleaners?



Standing and Hanging  
used in:

- Logistics / Warehouses
- Craft
- Industry
- Food Industry
- And any more

Despite modern work place air cleaners, it is often not possible to fully grasp and filter all contaminants that could occur in a hall in the production process. AirBull easily meets these requirements and improves the indoor air.



# The Portable System for Clean Air

## - WITHOUT RENOVATIONS -

### ADVANTAGES:

Simple portable systems:

Set up/hang up, turn on, clean air!

No renovation work!

Clean air at the touch, meaningful support of clean air in the workplace.

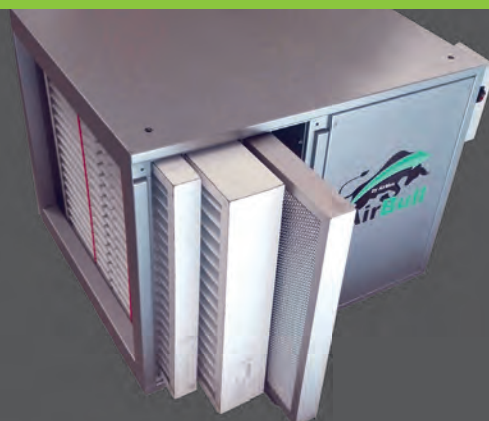
Environmentally friendly filter systems - minimum filter waste.  
Low starter cost, low life cycle costs.

Reduction of heating costs, as the heated indoor air is not blown outside in the winter, but is recycled once purified back into the hall.

Private customer service with delivery/installation and service.  
Full-service, upon request, including financing and filter changes from a single source.

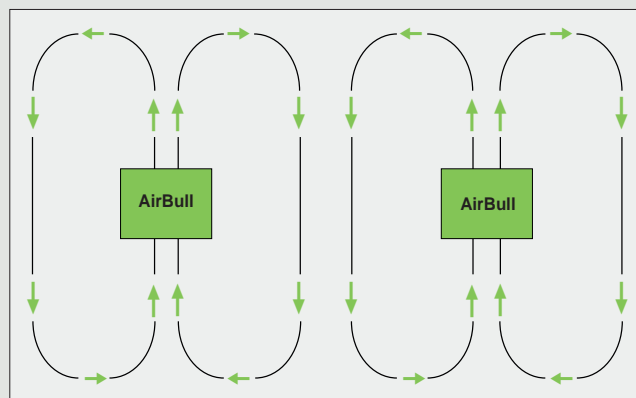
By less pollution in the work place, the occupational health of employees is secure.

Less pollution  
reduces cleaning costs.



# Planning and Placement

Our experts are at your disposal for the proper planning and placement.



The best air purification is achieved by placing the devices so that the air can circulate in a circular motion. In this manner, the same air can be cleaned several times. In larger halls, more AirBulls should be used to ensure optimum air cleaning. The performance of AirBull can be adjusted continuously depending on the requirements (air exchange).



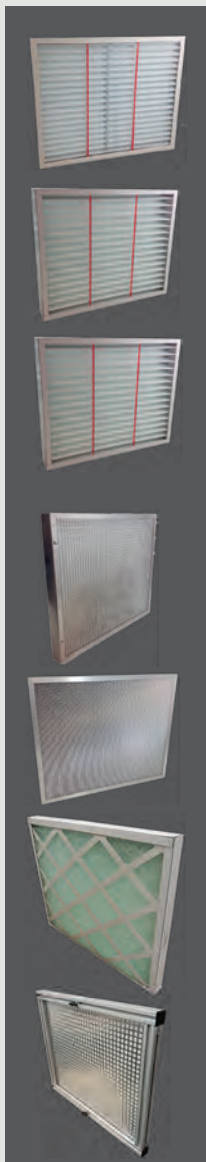


# Filter Types and Usage

As flexible as your needs:

Model	Item number	Smoke	Dust	Fine Dust	Oil Mist	Gase/Odors	Paint Mist
G4 Pre-Filter	AB072016-02	+	+	+		+	+
F7 Main Filter	AB072016-03	+	+	+	+		
Activated Carbon Tank	AB072016-05	+	+	+		+	
Aluminium mesh filter	AB072016-06				+		
G3 paint mist filter	AB072016-07						+
G3 coarse dust filter	AB072016-08		+				

With max. 4 filter inserts, the AirBull provides maximum flexibility and optimal performance for efficient use in industry and crafts.



## G4 Pre-Filter

Filter for the separation of dry particles in the air (dust).

## F7 Fine Dust Filter

Main filter for the separation of fine dust particles in the air.

## Oil Mist

F7 Filter with impregnated filter surface for the deposition of moist particles in the air.

## Activated Carbon Tank

Filled with 10 kg of granular activated carbon for the separation of gases and odors in the air.

## Aluminium mesh filter

Pre-filter for separating particles from air containing oil mist, or as protection against sparks.

## G3 paint mist filter

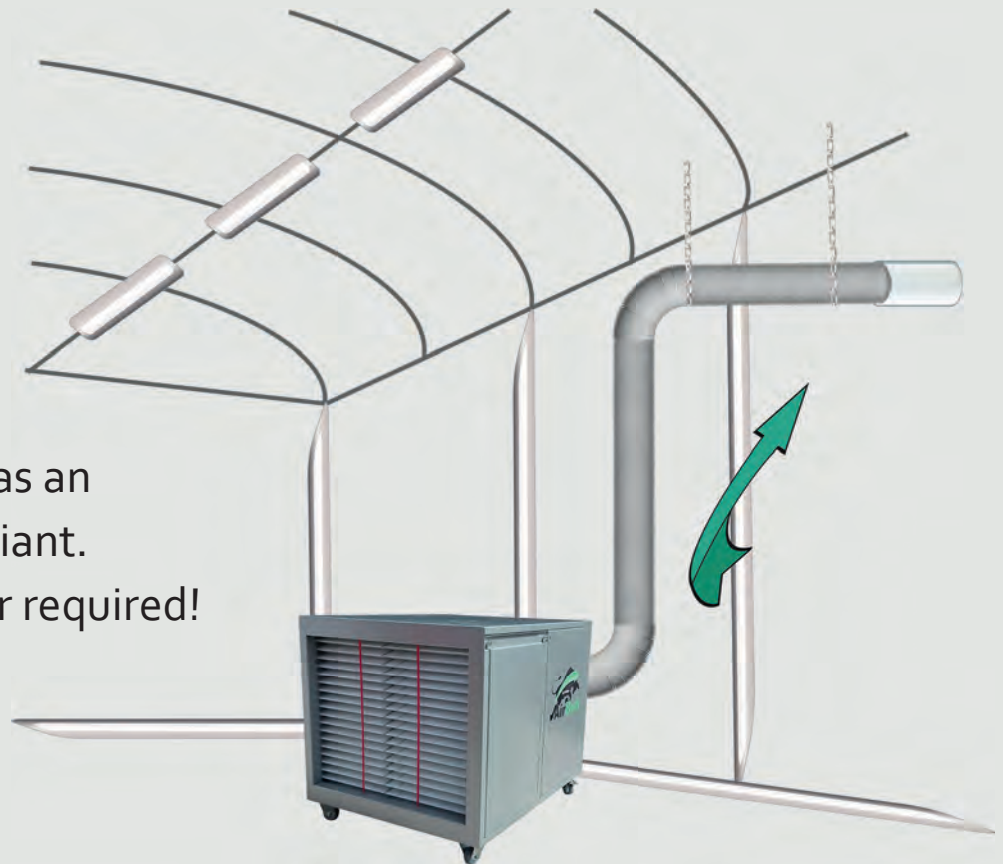
Also for paints containing solvent with explosion-protected motor.

## Pre-filter coarse dust G3 with filter frame

For very large quantities of dust in halls, saves costs by reducing the load on the downstream device filters.

# Special application exhaust air

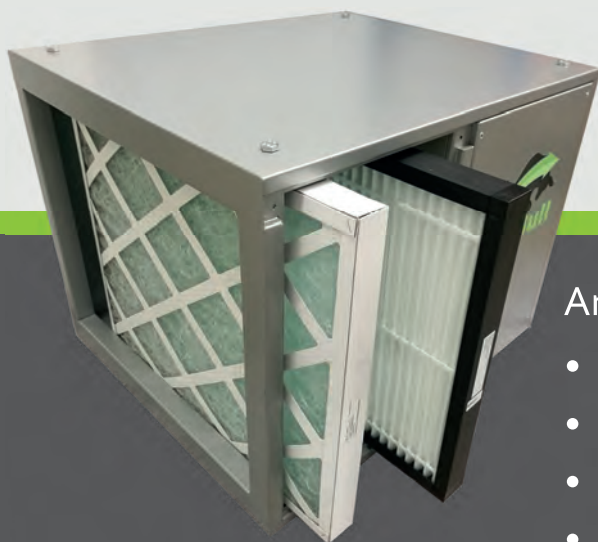
Also available as an exhaust air variant.  
**Advantage:** No filter required!



# Special application paint mist

Mobile paint mist extractor for workshop, construction site and spot repair.

**Set up, switch on -  
clean air as quick as a flash.  
That is the motto of the AirBull  
paint mist filter. Changing the  
filters is child's play, too.**



The powerful AirBull is especially easy to transport and ideal for mobile paint mist extraction. Equipped with a special paint mist filter and an additional G4 filter, it reliably captures and filters harmful particles of paint suspended in the air. In addition, an exhaust hose (250 mm in diameter) can be attached to the rear of the unit to discharge odours to the outside.

**For solvent-free paints with standard motor and for paints containing solvent with explosion-protected motor.**




Areas of application are:

- Spot repair work
- Manual painting work in craftsmanship and industry
- Painting work with pneumatic or airless systems
- Airbrush work



# Technical Specifications



+ AirBull 2000	+ AirBull 3500	+ AirBull Ex-Version 
Item number: AB072016-01	Item number: : AB072016-10	Item number: AB072016-01-Ex
2.000 m³/h (free blowing)	3.510 m³/h (free blowing)	1.200 m³/h (free blowing)
Power: 290 W / 1,03 A	Power: 530 W / 3 A	Power: 170 W / 0,71 A
Supply voltage: 230 V, 50 Hz	Supply voltage: 230 V, 50 Hz	Supply voltage: 230 V, 50 Hz
Noise levels: 49-65 dBA (at 3 m distance)	Noise levels: 48-69 dBA (at 3 m distance)	Noise levels: 49-65 dBA (at 3 m distance)
Motor infinitely variable	Motor infinitely variable	Motor protection switch: on/off
Dimensions (LxHxB): - 830 x 630 x 615 mm with wheels - 830 x 557 x 615 mm without wheels	Dimensions (LxHxB): - 830 x 630 x 615 mm with wheels - 830 x 557 x 615 mm without wheels	Dimensions (LxHxB): - 830 x 630 x 615 mm with wheels - 830 x 557 x 615 mm without wheels
Weight: 56 kg (differs depending on filter)	Weight: 56 kg (differs depending on filter)	Weight: 56 kg (differs depending on filter)
		Explosion protection: Ex II2G EEx e IIC T3
		Test certificate: in acc. with directive 94/9/EC (ATEX)
		Protection rating: IP 44

Your AirBull dealer will be happy to provide individual advice: